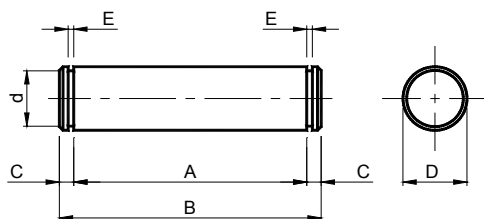


Tipo: **PERNI** – Type: **PINS**

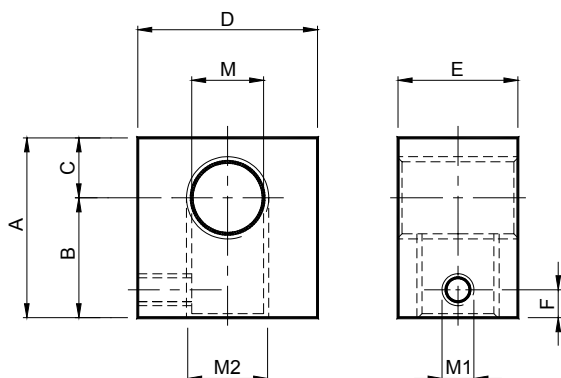


MATERIALI Acciaio
TRATTAMENTI Zincatura

MATERIALS Steel
TREATMENTS Electrolytic zinc plated

| Tipo Type | Cod. N° | A | B | C | ØD | Ød | E | Peso Weight in Kg |
|-----------|----------|---|-------|------|----|------|-----|-------------------|
| LA10 | TB001629 | 30 ^{+0.3} / _{+0.0} | 39 | 4.5 | 16 | 15.2 | 1.1 | 0.060 |
| LA11 | TB001630 | 35 ^{+0.3} / _{+0.0} | 44 | 4.5 | 16 | 15.2 | 1.1 | 0.068 |
| LA12 | TB001631 | 51 ^{+0.3} / _{+0.0} | 60 | 4.5 | 16 | 15.2 | 1.1 | 0.093 |
| LA13 | TB001632 | 56 ^{+0.3} / _{+0.0} | 65 | 4.5 | 16 | 15.2 | 1.1 | 0.101 |
| LA14 | TB001633 | 73 ^{+0.3} / _{+0.0} | 80 | 3.5 | 16 | 15.2 | 1.1 | 0.124 |
| LA15 | TB001634 | 35 ^{+0.3} / _{+0.0} | 45 | 5 | 20 | 19 | 1.3 | 0.109 |
| LA16 | TB001635 | 67.5 ^{+0.3} / _{+0.0} | 77.5 | 5 | 20 | 19 | 1.3 | 0.188 |
| LA17 | TB001636 | 105 ^{+0.3} / _{+0.0} | 115 | 5 | 20 | 19 | 1.3 | 0.277 |
| PF110 | AR004730 | 51.3 ^{+0.3} / _{+0.0} | 60 | 4.35 | 8 | 7.6 | 0.9 | 0.023 |
| PF120/30 | AR004731 | 58.5 ^{+0.3} / _{+0.0} | 68 | 4.75 | 10 | 9.6 | 1.1 | 0.040 |
| PF140 | AR004732 | 75.5 ^{+0.3} / _{+0.0} | 85 | 4.75 | 20 | 19 | 1.3 | 0.206 |
| PF150 | AR004733 | 111.5 ^{+0.3} / _{+0.0} | 121.5 | 5 | 30 | 28.6 | 1.6 | 0.663 |
| PF160 | AR004734 | 157 ^{±0.10} | 167 | 5 | 30 | 28.6 | 1.6 | 0.916 |
| PF140/P | AR004735 | 75.5 ^{+0.3} / _{+0.0} | 85 | 4.75 | 12 | 11.5 | 1.1 | 0.074 |
| PF150/P | AR004736 | 111.5 ^{+0.3} / _{+0.0} | 121.5 | 5 | 20 | 19 | 1.3 | 0.295 |
| PF160/P | AR004737 | 157 ^{±0.10} | 167 | 5 | 20 | 19 | 1.3 | 0.405 |

Tipo: **PIASTRINA PI** / Type: **PLATE PI**



| Tipo Type | Cod. N° | A | B | C | D | E | F | M | M1 | M2 | Peso Weight in Kg |
|----------------|----------|----|------|------|----|----|----|-----|----|-----------------|-------------------|
| PI10 M8 | AR070576 | 30 | 20 | 10 | 20 | 15 | 7 | M8 | M8 | M ₁₀ | 0.053 |
| PI10/20/30 M10 | AR070578 | 30 | 20 | 10 | 20 | 15 | 7 | M10 | M8 | M10 | 0.051 |
| PI10/20/30 M16 | AR070582 | 30 | 20 | 10 | 30 | 15 | 7 | M16 | M8 | M10 | 0.073 |
| PI40 M12 | AR070584 | 35 | 22.5 | 12.5 | 30 | 20 | 7 | M12 | M8 | M14 | 0.125 |
| PI40 M16 | AR070586 | 35 | 22.5 | 12.5 | 30 | 20 | 7 | M16 | M8 | M14 | 0.115 |
| PI50 M16 | AR070588 | 45 | 30 | 15 | 45 | 30 | 7 | M16 | M8 | M20 | 0.369 |
| PI50 M20 | AR070590 | 45 | 30 | 15 | 45 | 30 | 7 | M20 | M8 | M20 | 0.354 |
| PI60 M20 | AR070592 | 50 | 35 | 15 | 50 | 35 | 10 | M20 | M8 | M24 | 0.513 |

MATERIALI Acciaio
TRATTAMENTI Zincatura

MATERIALS Steel
TREATMENTS Electrolytic zinc plated