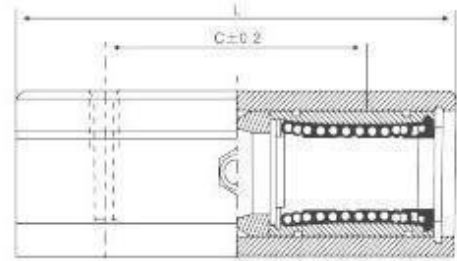
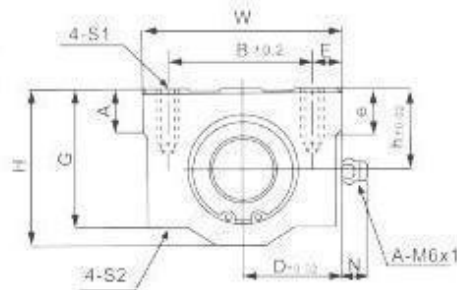


LINEAR SHAFTS AND BALL BUSHINGS

▼ **KBA\_L SERIES (EUROPE SERIES)**



Type	Shaft $\varnothing$	h	D	W	L	F	G	T	B	C	E	S1xe	S2	Weight
	(mm)													(g)
KBA10LUU	10	13	20	40	68	26	21	8	28	46	6	M5x12	4,3	180
KBA12LUU	12	15	22	44	77	30	24,5	8	33	64	5,5	M5x12	4,3	237
KBA16LUU	16	19	25	50	89	38,5	32,5	9	36	79	7	M5x12	4,3	405
KBA20LUU	20	21	27	54	100	41	35	11	40	90	7	M6x12	5,2	510
KBA25LUU	25	26	38	76	136	51,5	42	12	54	119	11	M8x18	7	1220
KBA30LUU	30	30	39	78	154	59,5	49	15	58	132	10	M8x18	7	1580
KBA40LUU	40	40	51	102	180	78	62	20	80	150	11	M10x25	8,7	3180
KBA50LUU	50	52	61	122	230	102	80	25	100	200	11	M10x25	8,7	6990