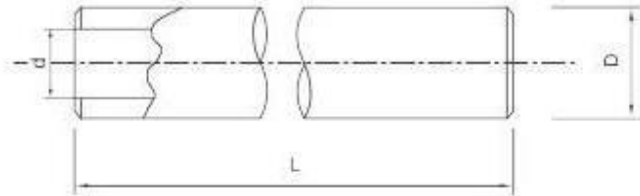


LINEAR SHAFTS AND BALL BUSHINGS

WH HOLLOW SHAFT



Type	D h6	d ($\pm 10\%$)	L	Surface hardness depth	Roundness	Parallelism	Weight
	(mm)	(mm)	Max. length (mm)				
WH 16	16	7	6000	1,1-1,5	8	11	1,28
WH 20	20	14		1,2-1,5	9	13	1,25
WH 25	25	15,6		1,5-1,7	9	13	2,35
WH 30	30	18,3		1,5-1,9	9	13	3,5
WH 40	40	28		1,9-2	11	16	4,99
WH 50	50	29,7		2,2-2,6	11	16	9,91
WH 60	60	36		2,2-2,6	13	13	14,2
WH 80	80	57		2,2-2,6	13	13	19,43

Shaft material: CK60