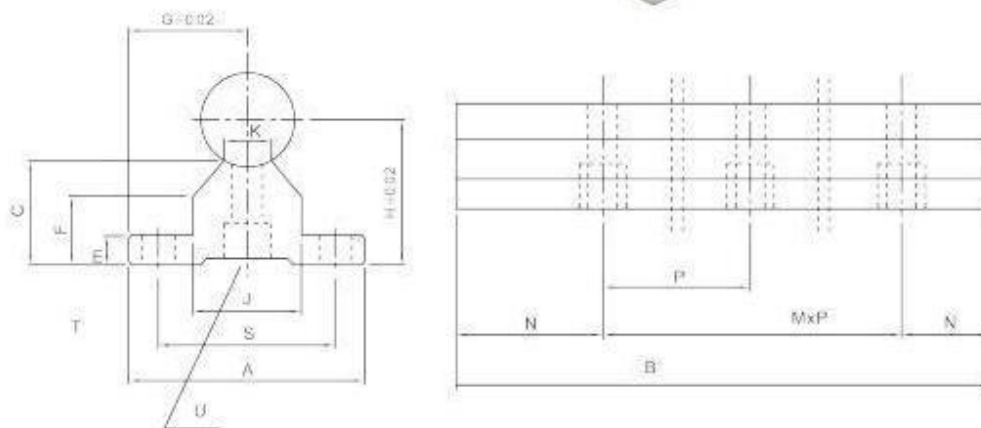


LINEAR SHAFTS AND BALL BUSHINGS

SA SLIDE UNIT



Type	Shaft \varnothing	H	G	A	B (max)	C	E	F	J	K	L	P	S	T	U	Weight
SA16	16	25	20	40	4000	17,8	5	11,7	18,5	8	80°	150	30	5,5	M5	1
SA20	20	27	22,5	45	4000	17,7	5	10	19	8	50°	150	30	5,5	M6	1,2
SA25	25	33	27,5	55	4000	21	6	12	21,5	8	50°	200	35	6,5	M6	1,46
SA30	30	37	30	60	4000	22,8	7	13	26,5	13	50°	200	40	6,5	M8	1,84
SA35	35	43	32,5	65	4000	26,5	8	15,5	28	13	50°	200	45	9	M8	2,38